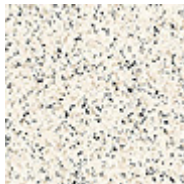


## UltraTile Conductive Homogeneous Sheet Vinyl



UltraTile Conductive not only provides a new level in ease of installation of static conductive flooring but also superior hygiene by eliminating potential contamination and breakdowns of conductivity. Suitable for environment requiring static conductive flooring, such as operating rooms and computer rooms.

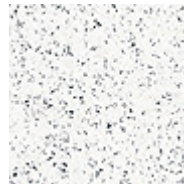
### Colors:



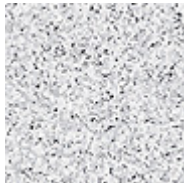
**UT-799**  
**Crabby Beige**



**UT-800**  
**Key West Beach**



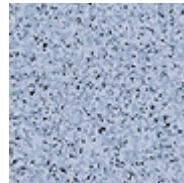
**UT-801**  
**Moon Light White**



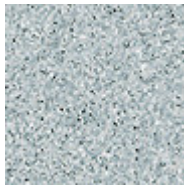
**UT-802**  
**Dolphin Grey**



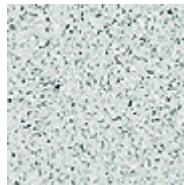
**UT-803**  
**Shark Bait Grey**



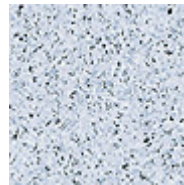
**UT-804**  
**Coral Cay Blue**



**UT-805**  
**Gulf Coast Green**



**UT-806**  
**Tortuga Green**



**UT-807**  
**Bimini Bay Blue**



**Ground Zero Electrostatics**  
**UltraTile Conductive Homogeneous Sheet Vinyl**

**Specifications**

<b>Technical data</b>		<b>UltraTile Conductive</b>
Type of floor covering	EN 649	Conductive homogeneous vinyl flooring
Classification	F-1913	Exceeds (Also meets ASTM F-1303, Type II, Group 1, Class B)
WearLayer thickness	EN 429	0.080 gauge (2.0 mm)
Total Thickness	EN 428	0.080 gauge (2.0 mm)
Weight/m'/sq yd	EN 430	5.7 lbs sq yd (3.1 kg sq meter)
Abrasion/thickness loss	Pr EN 660: Part 1	Group P: < 0.15 mm
Residual indentation	F-970/modified	125/800 lbs./sq. in.
Wear by chair castors	EN 425	suitable
Underfloor heating		suitable up to 90° F
Impact sound resistance	DIN52210	+3dB
Electrical resistance	DIN 51953 F-150 ANSI / ESD-57.1-94	10 <sup>4</sup> -10 <sup>6</sup> ohm @ 500 volts 10 <sup>4</sup> - 10 <sup>6</sup> ohm @ 100 volts 10 <sup>4</sup> - 10 <sup>6</sup> ohm
Thermal conductivity	DIN 52612	.013m k/w
Fire resistance	E-662 E-648	<450 > .45 watts / cm2
Slip resistance	D-2047	> .5
Color fastness	EN 20105-B02	> . level 6
Chemical resistance	EN 423	good resistance
Colors		9
Sizes — Roll length		approx. 82' 7"(25 lin meters)
Width		Nominal 6' 6" (2 meters)
Tile Size		Nominal 24" x 24" (61 cm x 61 cm)
Quantity		14 tiles per ctn 56 sq ft (5.21 m2 per ctn)

