

Uni-Stat Conductive Solid Vinyl Sheet ESD Flooring



A premium pure solid flexible ESD sheet vinyl manufactured utilizing a calendering process, which incorporates a full conductive embossed bottom layer. Fully weldable for seamless installations and available in both ESD conductive and ESD static dissipative ranges.

TECHNICAL DATA

Federal Specifications:

Exceeds performance characteristics of LF-475a and SS-T-312B for flexibility, dimensional stability, resistance to reagents and residual indentation

Surface Resistivity:

UNI-Conductive PTP (NFPA-99) ASTM D257 <math> < 5.5 \times 10^7 </math> ohms

UNI-Dissipative PTP (NFPA-99) ASTM D257 <math> < 5.5 \times 10^8 </math> ohms

Electrical Properties:

UNI-Conductive EOS-ESD 7.1 RTG <math> < 1.5 \times 10^6 </math> ohms

UNI-Dissipative EOS-ESD 7.1 RTG <math> < 1.5 \times 10^7 </math> ohms

Static load limit DIN 16961.2:

>700lbs/in² >700 psi

Charge Decay Time FTMS 4046-101c < .17 seconds

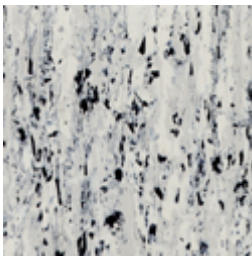
Size: 5' x 82.5' Rolls, .080 Thick

ITEM	COLOR	DESCRIPTION
UNI-012 D/C	GRAY	UNI-STAT CONDUCTIVE/ DISSIPATIVE
UNI-123C	BEIGE	UNI-STAT CONDUCTIVE/ DISSIPATIVE
UNI-212C	GRAY	UNI-STAT CONDUCTIVE/ DISSIPATIVE
UNI-288C	WHITE	UNI-STAT CONDUCTIVE/ DISSIPATIVE
UNI-314D/C	GRAY	UNI-STAT CONDUCTIVE/ DISSIPATIVE
UNI-7810D	WHITE	UNI-STAT DISSIPATIVE
UNI-7812D	GRAY	UNI-STAT DISSIPATIVE
UNI-7851D	GRAY	UNI-STAT DISSIPATIVE

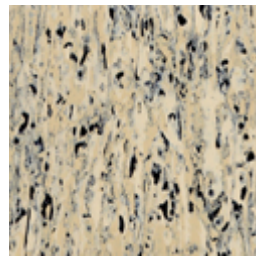
Physical Properties

Surface Resistivity P.T.P.	ASTM D257	<8 x 10 ⁸ ohms
Resistance to Ground	EOS-ESD 7.01	<5.5 x 10 ⁷ ohms
Charge Decay Time	FTMS 4046-101c	<<.17 seconds
Flammability	Radiant Panel ASTM E648	.73W/cm ² , Class I
Smoke Density	ASTM E-662, NFPA 258	<450 average smoking/smoldering
Residual Indentation	LF-475A	.002" average
Abrasive Wear, Taber 1000 gm weight	H-18 wheels, 5000 cycles	1.1% loss of weight
Static Load Limit	DIN 16961.2	>700 p.s.i.
Meets or exceeds minimum requirements of Federal Specifications for flexibility, dimensional stability, resistance to reagents and residual indentation	LF-475a SST-312b	

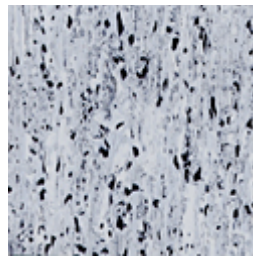
COLORS



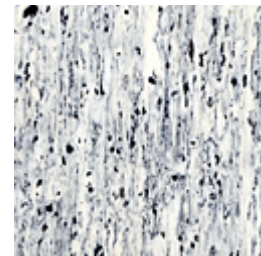
UNI - 012 D/C



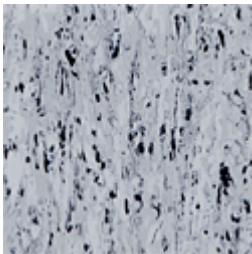
UNI - 123 D/C



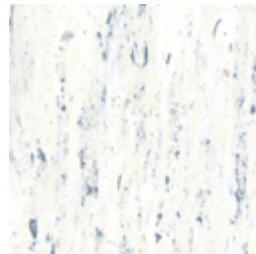
UNI - 212 D/C



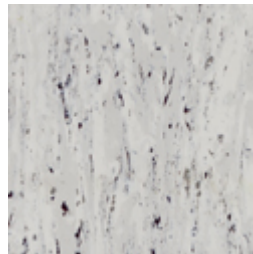
UNI - 288 D/C



UNI - 314 D/C



UNI - 7810 D



UNI - 7812 D



UNI - 7851 D