

UltraStone Rubber Flooring



Brilliant color with the look of marble. Nine colorways in all. Featuring flexible, neutral color blends like Brownstone, Castlerock and Sharin' Stone.

The appearance of tasteful marble chips combined with the attributes of high-quality, reprocessed EPDM rubber. THAT'S UltraStone!

Plus, UltraStone is right in line with the new ASTM Sustainability Assessment (ASTM E2129-01). This new practice celebrates the green properties and sustainability of UltraStone products, raw materials and manufacturing processes. Waste not - want not. This is all about protecting the our natural resources.

FEATURES AND BENEFITS

- ☀ Complies with new ASTM Sustainability Assessment
- ☀ Single-ply, non-laminated
- ☀ Indoor and outdoor
- ☀ Outstanding slip-resistance
- ☀ Unbelievable durability
- ☀ Cushioned resilience
- ☀ Stain resistance
- ☀ Consistent color (no wear layer)
- ☀ Low VOC emissions
- ☀ Custom colors
- ☀ Logo/graphic inlays
- ☀ Easy installation/maintenance

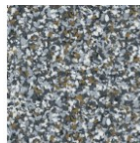
VARIOUS DIMESNIIONS

ROLLS	
Width:	48"
Thickness:	4mm (5/32") standard 6mm (1/4") special - Min. 1600 sq. ft. increments ONLY
Weight:	4mm 1.1lbs/sq.ft. 6mm 1.7lbs/sq.ft.
Length:	200 sq/ft (50 l/ft) per roll
TILE	
Size:	36" x 36" 18" x 18"
Thickness:	4mm (5/32") standard 6mm (1/4") special - Min. 1600 sq. ft. increments ONLY

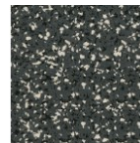
ITEM NUMBERS

Color	Item Number
Brownstone	FM-US-48-801
Roadrock	FM-US-48-805
Bedrock	FM-US-48-806
Riverrock	FM-US-48-807
Gravelrock	FM-US-48-808
Castlerock	FM-US-48-809
Rollin' Stone	FM-US-48-810
Sharin' Stone	FM-US-48-811
Moonrock	FM-US-48-812

COLORS



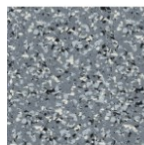
Brownstone
FM-UE-48-801



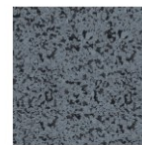
Roadrock
FM-UE-48-805



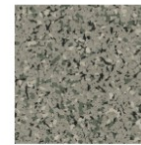
Bedrock
FM-UE-48-806



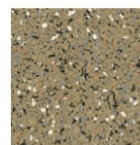
Riverrock
FM-UE-48-807



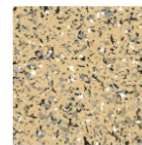
Gravelrock
FM-UE-48-808



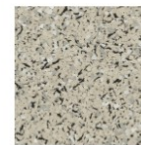
Castlerock
FM-UE-48-809



Rollin' Stone
FM-UE-48-810



Sharin' Stone
FM-UE-48-811



Moonrock
FM-UE-48-812



Ground Zero Electrostatics ULTRASTONE RUBBER FLOORING

SPECIFICATIONS

Test	ASTM	EPDM
Tensile Strength	D412	200 lb/in ² min
Flexibility	F137	Pass ¼ inch mandrel
Coefficient of Friction	D2047	>0.9
McBurney Indentation	F142, 1 min	0.0080 inches
Thermal Conductivity	C518	0.406 Btu-in/hr-ft ² -°F
Static Load Limit	F970, 400 lbs	<0.005 in
Chemical Resistance	F925	No change
Impact Insulation	Class E492	48
Sound Transmission Coefficient	E413	51
Noise Reduction Coefficient	C423	0.10 sabine/ft ²
Sustainability	E2129-01	data collected

INSTALLATION

Basic installation procedures and tools are the same as for other standard commercial resilient flooring and should be installed by experienced floor-covering mechanics. Instructions are outlined in the UltraStone technical manual must be followed.

MAINTENANCE

GZ Rubber Flooring must be maintained as recommended. The type and frequency of maintenance will vary according to maintenance equipment and desired appearance of product.



4916 26th Street West, Suite 100, Bradenton, Florida 34207

Toll Free 877-GND-ZERO (463-1376), **Direct Phone** 941-751-7581 **Fax** 1-941-751-7586

Email sales@gndzero.com

http://www.gndzero.com